



# Capabilities Statement

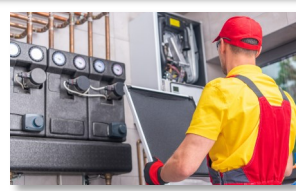
Iwynn Productions, LLC was formed in 2010 and offers a broad range of professional high-quality General Contracting and Project Management Services. Our Construction Division has a team with a combined 25 years of experience in the DC, Maryland and Virginia area.



## Core Competencies

### Construction Services

- ✓ Residential
- ✓ Commercial
- ✓ Architectural & Engineering (A&E)
- ✓ Demo Work



### Mechanical

### Electrical

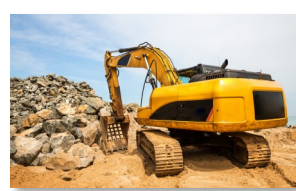
### Plumbing

### HVAC

### Excavation and Grading

### Landscaping

### Cement



## Differentiators

- Safety and Compliance project managers ensure all protocols are followed without incidences.
- Not only do we pride ourselves on our service delivery, but we also invest ourselves on a personal level. As a small company, we are afforded the ability to engage our customers during our one-on-one communications, affirming the job will get done correctly and on time.

## Corporate Data

**CAGE:** 9C5C2 | **UEI:** L9Y5UL7BD751  
**Gov. Bus. POC:** Marty Wynn  
**Phone:** (301) 892 - 0076  
**E-Mail:** [marty@iwynnproductions.com](mailto:marty@iwynnproductions.com)  
**Address:** 15480 Annapolis Rd. Ste 202-135 Bowie, MD 20715  
**Work Area:** Nationwide  
**Socio-Economic Status:** EDWOSB, WOSB, MBE, 8(a)  
**NAICS:** 236115(P), 236116, 236118, 236220, 238110, 238130, 238140, 238160, 238190, 238210, 238220, 238310, 238320

## Past Performance



### General Services Administration (GSA)

**Date(s):** 2021 - Present

**Details:** Motor Control Replacement Remove fifteen (15) and install thirteen (13) 480-volt Motor Control Centers combined with Power Distribution Panels, approximately 282 low voltage breakers (frames from 100amp-225amp) along with approximately 62 future unit spares. Each new MCC shall be in combination of a new Power Distribution Panel. Contractor shall remove, dispose of and replace the Electrical Switchboard Panel which meets the existing voltage characteristics and includes a transformer.



### General Services Administration (GSA)

**Date(s):** 2015 - 2018

**Details:** Consolidated Facilities Management (CFM) Successfully served the O&M contracts for the 327,000-foot USDA APHIS building in Riverdale, Maryland. This project is contracted approximately 1.8 million per year. Contractor shall provide all necessary labor, materials, equipment and supervision to perform Operations and Maintenance (O&M) Services at 4700 River Road.



### General Services Administration (GSA)

**Date(s):** 2015 - 2017

**Details:** Construct East and West Emergency Exit Stairs Design and construct new emergency exit stairs on the east and west end of the building to bring it into compliance with NFPA 101, life safety code for an industrial occupancy.